



# User Manual

Wi-Fi Smart LED Ceiling Light

Color Changing & Tunable White



## Contents

Setting Smart Life App	01
Quick mode Configuration	02
Control Devices-Individual Control	04
Control Devices-Group Control	05
Home/Member Management	06
Personal- Modify Login Password	07
How to connect smart device to Alexa/Google Home	08
Installation Instructions	13

### Setting Smart Life App

Step 1:

Method 1, Scan the below QR code and install the Smart Life App.



Method 2, Search for "Smart Life" to download in App Store or Google Play and install it for iOS/Android.

Tips: This App is compatible with mobile devices IOS 8.0 and above and Android 4.0 and above.

Step 2:

Launch the "Smart Life" App, the App will ask you to register your device.

Enter your phone number or email and select the country you live in.

Step 3:

After inputting phone number, you will receive a text with a registration code. And if you choose email you will be asked to create a password.

Input the registration code you received or create password if email method chosen.

Tips:

Fast register through other communication Apps which show on the bottom of the homepage of "Smart Light" App, such as Facebook, Wechat.

It is recommended to register by email or mobile number if you need to use Amazon Alexa and Google Home for voice control.

## Quick mode Configuration (Recommend)

1. Before connecting, please make sure your smart phone or device is connecting with your Wi-Fi successfully, and open the bluetooth in the same time.

2. Turn ON-OFF the smart light for 3 times until it blinks rapidly. (If the smart light blinks rapidly when turn on the power, it means it's ready for configuration already.)

3. Open the App and click "+" to add device.

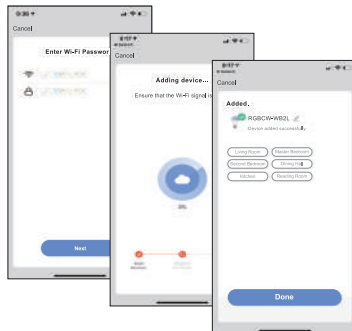
4. The device will be showed on the page automatically, click "Go to add".

5. Choose your Wi-Fi and enter password.

6. It shows the process of adding device to the App, only when 100% it means the device added to the App, otherwise it means there's problem of the Wi-Fi, you may need to fix the router or change other Wi-Fi.

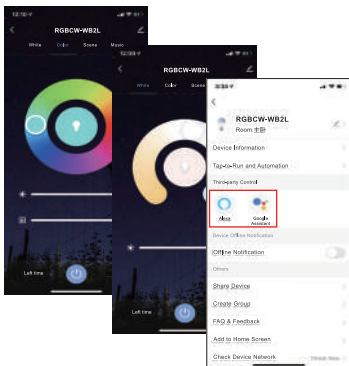
7. When the device is added, you can edit its name, choose its location, then click "Done".

8. Now you can control the smart device through "Smart Life" App.



## Control Devices-Individual Control

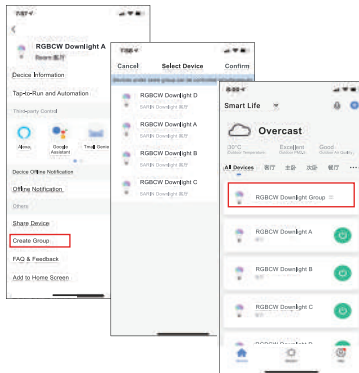
1. Click the smart light on the homepage to open control panel.
2. When the control panel is dark, it means the light is OFF status and only the timer can be accessed.
3. Click the button to turn on the light, there are four columns "White" "Color" "Scene" "Music" can be chosen, then DIY your smart light on your request.
4. Click "⌵" at the top right corner of control panel to manage the smart light individually.



5. Click "Alexa" or "Google Assistant", there will be detailed instructions of how to realize voice control.

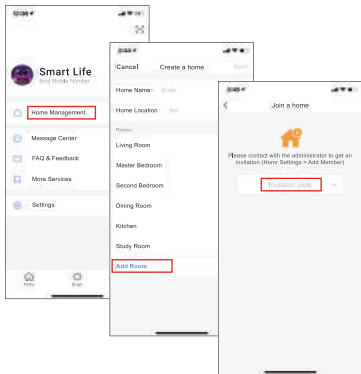
## Control Devices - Group Control

1. On the individual control page, click "Creat Group".
2. Select the smart lights which you would like to group control and click "Save", enter group name and confirm.
3. Operate the lights by group at the group control panel, click "⌵" at top right corner to configure or dismiss groups.
4. The group that have been created can be viewed at homepage and managed with hotkey.



## Home/Member Management

1. Click "Me"->"Home Management"->"Create a Home"page.
2. Set your "Home Name" and "Home Location".
3. Click "Add Room" to add a room if needed.
4. If you want to join a home, please contact with administrator to get an invitation code, enter it and confirm.



## Personal-Modify Login Password

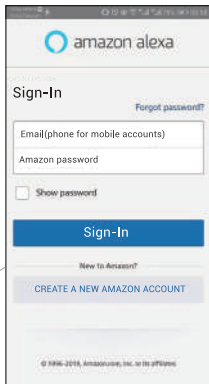
1. Click "Me"->"Settings"->"Account"->"Account and Security"-> activate "Pattern Lock", and set a patten password.
2. You will have to use the patten to access the App when you open it every time.
3. Click "Forgot patten lock" if you forget your patten password,it will help to set a new one.



## How to connect smart device to Alexa/ Google Home

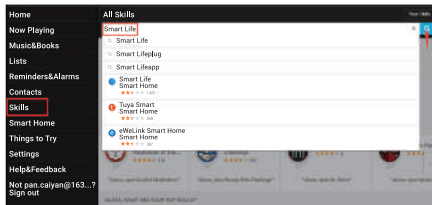
Before you start, make sure that:

Your smart device is connected with WIFI and can be controlled by App.  
You have an Alexa-enabled device(Echo, Echo dot, etc.), or a device enabled with Google Assistant(Google Home, etc.).  
The Alexa App or the Google Home App which is already installed on your smart phone and you have created an account.

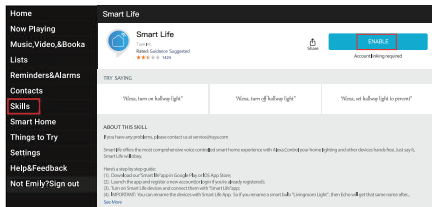


To control your device with Amazon Alexa:  
1.Open the Alexa App and select "Skills" from the menu in the top left corner of the homepage.

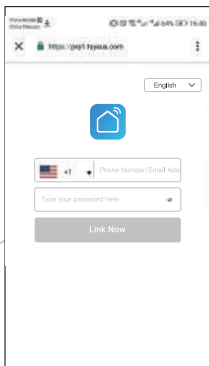
2.On the "Skills" page, search for "Smart Life".



3.Enable it in Alexa APP.



4.Login with your "Smart Life" account to authorize Alexa to access to your account.



After your smart device is connected with Alexa successfully, you can simply ask Alexa to set your device like this:

- Alexa, turn on < device name >
- Alexa, turn off < device name >
- Alexa, set < device name > to percent
- Alexa, brighten/increase < device name >
- Alexa, dim/decrease < device name >
- Alexa, set < device name > to(color)
- Alexa, set < device name > to (color temperature)
- Alexa, make / set < device name > warmer
- Alexa, make / set < device name > cooler

To control your devices with Google Home:

- 1.Open the Google Home App, tap the "+" icon in the homepage,then select "Set up device" in the "Add and manage" page.
- 2.In the "Set up" page, tap "New devices" to set up new devices in your home, like your Google Home speaker and smart lighting products. Tap "Works with Google" to authorize the Google Home with your "Smart Life" account.

5.Discover new smart devices via the "Smart Home" menu in the Alexa App or Alexa voice control. Now you can control your Smart device through Alexa.

